



PRODUCT BROCHURE

HIGH-PERFORMANCE BREAKAWAY
POST-TO-BASE & POLE-TO-BASE
COUPLING SYSTEMS



AWARD- WINNING BREAKAWAY SYSTEMS

Driving is an activity filled with risk. For more than forty years, Safety Base has designed and engineered products to reduce the risk to commuters by making the road a safer place to be.

Our time-tested technology reduces injuries and saves lives.

Safety Base breakaway systems are designed to reduce both the initial cost of installation as well as the cost of retrofitting existing highway signage and light poles. Additionally, our high-performance systems protect the foundation anchor bolts meaning knocked down signage and poles can be re-installed with ease.

The convenience and simplicity of our breakaway systems are a few of the reasons why our products can be found on highways and city streets around the world.

Manufactured to withstand all road and weather conditions, Safety Base pole-to-base coupling systems are strong enough to tolerate wind and static forces, but engineered to fracture from the impact of a moving vehicle leaving minimal snag height and protecting the anchor bolts.

After the impact, the couplers and brackets can easily be removed and replaced with a new set before the undamaged pole or post is lifted back into position and re-installed.

Since its creation over 50 years ago in Winnipeg, Canada, Safety Base has engineered the breakaway coupler to perform like no other.

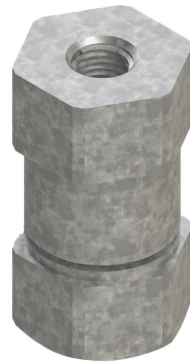
Some of the features that make our breakaway coupler unique include:

- Fractures through bending moment of impact
- Protects foundation anchor bolts
- Easy to install and maintain
- Compatible with both male and female anchors
- Includes levelling nut to easily adjust signpost for height and plumbness
- Meets or exceeds AASHTO standards and requirements

Available in four different sizes to suit your application:

- C5 - 1"
- C6 - 1 1/8"
- C7 - 1 1/4"
- C10S - 5/8"

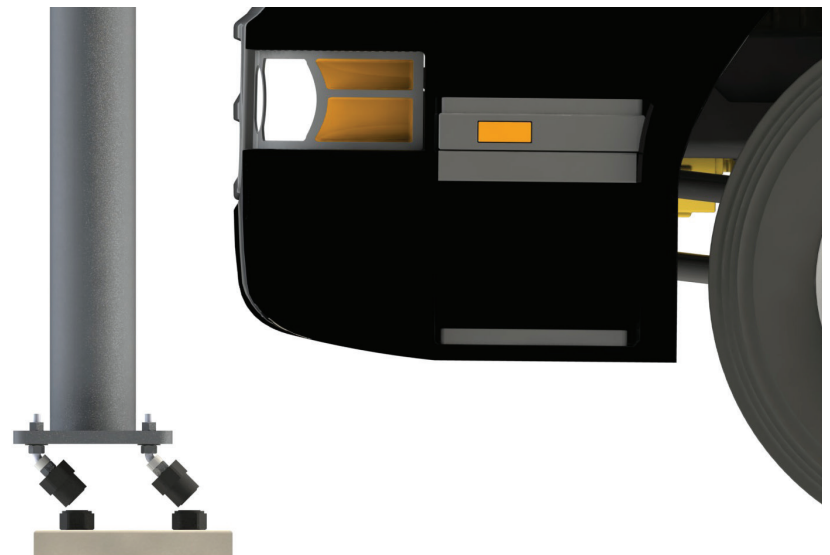
C7 COUPLER – FRONT



C7 ASSEMBLY – PROFILE



SIDE IMPACT – ILLUSTRATION



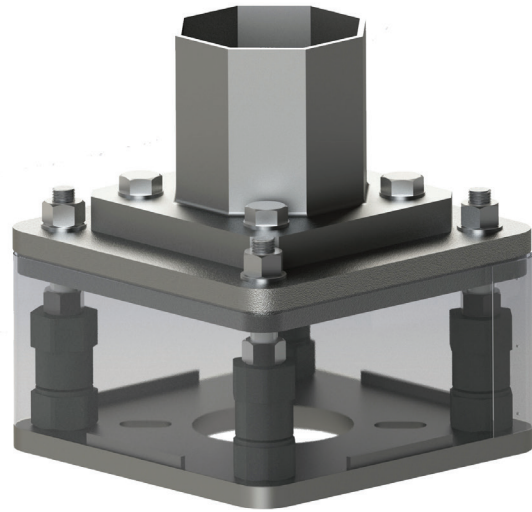
COUPLERS

TRAFFIC SIGNALS & LUMINAIRES

The distinctive design of Safety Base breakaway systems allows installers to retrofit the product to traffic signals and light poles of all sizes. Our system is the only frangible breakaway system tested to the heaviest and tallest light pole (55 ft, 1200 lbs) at the Texas Transportation Institute.

Our engineering team can customize our breakaway systems to meet any of your traffic needs.

RP9-TP9 – PROFILE



RP9-TP9 – EXPLODED



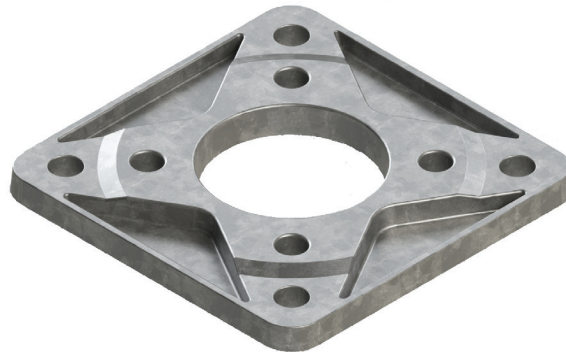
A core feature of our breakaway system is the reaction plate, which is designed to protect the anchor bolts by distributing the force of an impact uniformly amongst the couplers. Plates can be specifically manufactured for a variety of BCD's and can transition from small anchor BCD's to large BCD's in order to accommodate larger pole sizes.

Aluminum shroud covers can be made to any BCD specification requested and are also available painted to order.

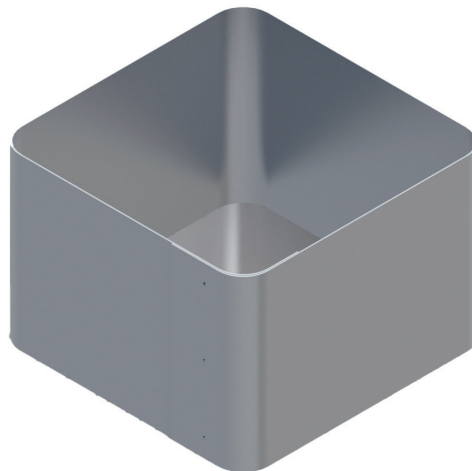
RP2 REACTION PLATE – TOP



TP24C TRANSITION PLATE – TOP



ALUMINUM SHROUD – PROFILE





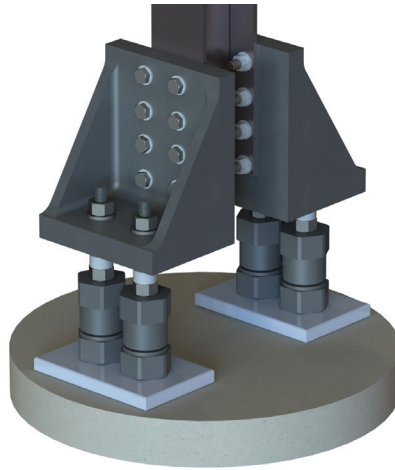
YOUR RIGHTS
If you are a victim of a crime, you have the right to:
- Be treated with dignity and respect.
- Be informed of your rights.
- Be heard.
- Be treated fairly.
- Be treated with respect for your culture, language, and religion.
- Be treated with respect for your gender identity and expression.
- Be treated with respect for your sexual orientation.
- Be treated with respect for your age.
- Be treated with respect for your disability.
- Be treated with respect for your race and ethnicity.
- Be treated with respect for your national origin.
- Be treated with respect for your ancestry.
- Be treated with respect for your place of birth.
- Be treated with respect for your marital status.
- Be treated with respect for your family status.
- Be treated with respect for your social and economic status.
- Be treated with respect for your political beliefs.
- Be treated with respect for your religious beliefs.
- Be treated with respect for your philosophical beliefs.
- Be treated with respect for your moral beliefs.
- Be treated with respect for your personal beliefs.
- Be treated with respect for your individual beliefs.
- Be treated with respect for your unique beliefs.
- Be treated with respect for your personal freedoms.
- Be treated with respect for your personal choices.
- Be treated with respect for your personal decisions.
- Be treated with respect for your personal actions.
- Be treated with respect for your personal inactions.
- Be treated with respect for your personal thoughts.
- Be treated with respect for your personal feelings.
- Be treated with respect for your personal opinions.
- Be treated with respect for your personal beliefs and values.
- Be treated with respect for your personal identity.
- Be treated with respect for your personal dignity.
- Be treated with respect for your personal worth.
- Be treated with respect for your personal value.
- Be treated with respect for your personal contributions.
- Be treated with respect for your personal achievements.
- Be treated with respect for your personal successes.
- Be treated with respect for your personal failures.
- Be treated with respect for your personal struggles.
- Be treated with respect for your personal challenges.
- Be treated with respect for your personal hardships.
- Be treated with respect for your personal difficulties.
- Be treated with respect for your personal setbacks.
- Be treated with respect for your personal disappointments.
- Be treated with respect for your personal losses.
- Be treated with respect for your personal grief.
- Be treated with respect for your personal pain.
- Be treated with respect for your personal suffering.
- Be treated with respect for your personal suffering.
- Be treated with respect for your personal suffering.

NOVEMBER 6TH 2011 - 11AM
NATIONAL GATHERING
HONOUR OF BIPOLAR
SPEAKING UP AND
POLICE WOULD
HERE ON TREAT
HERE AT THE WIFE
HEADQUARTERS IN
THE MID-LEGISLATIVE
FAMILIES ACROSS CANA
AGAINST POLICE

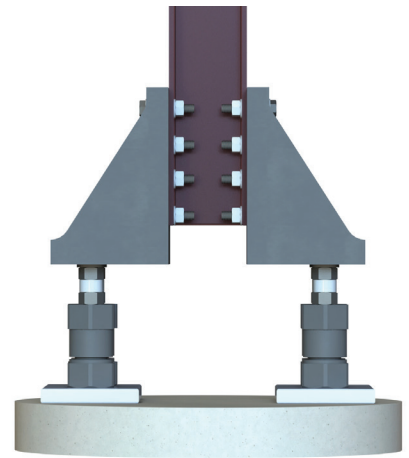
QUESTION MARK
APONS

The SB500 Roadside Signage WF-Beam is an omni-directional breakaway system that activates when a vehicle collides with it. Available in a range of configurations, the SB500 system can be made to fit a variety of wide-flange beams.

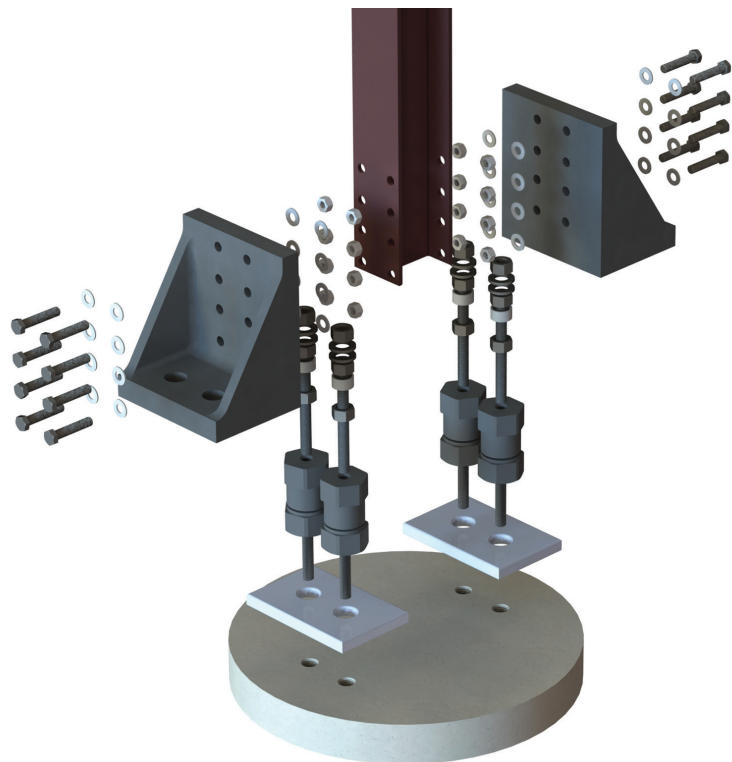
SB500 – PROFILE



SB500 – FRONT



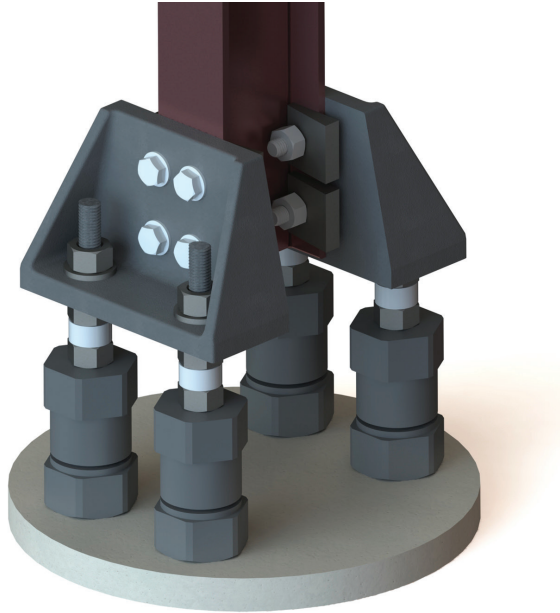
SB500 – EXPLODED



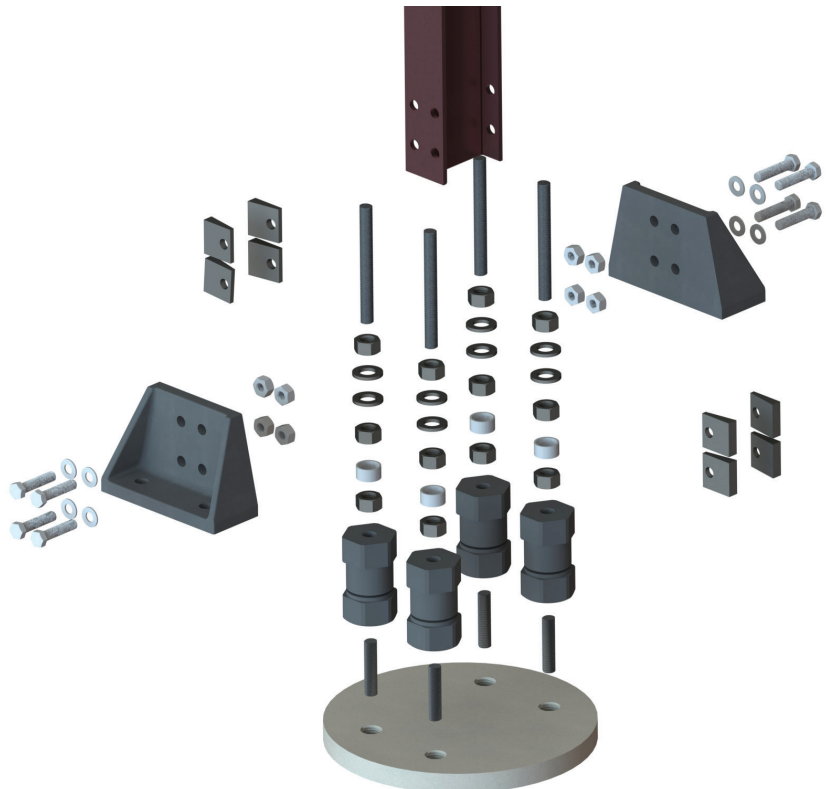
SB500

The SB501 Roadside Signage S-Beam is another omni-directional break-away system offered by Safety Base. Available in a range of configurations, the SB500 system can be made to fit a variety of smaller S-beams.

SB501 – PROFILE



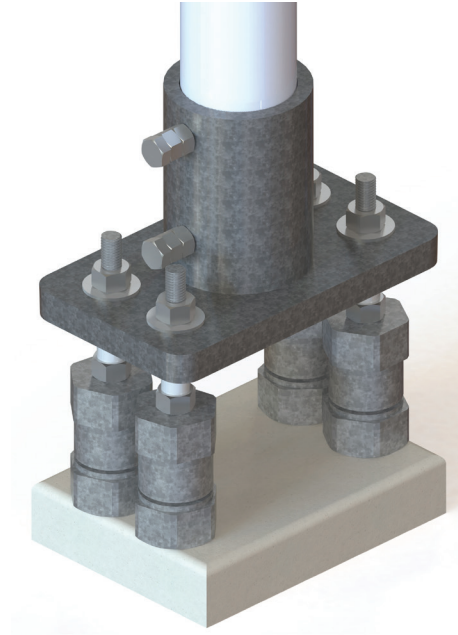
SB501 – EXPLODED



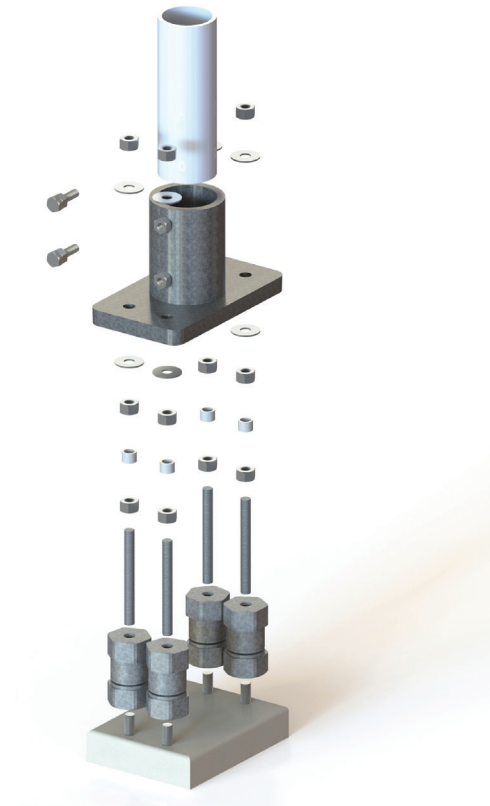
SB501

The SB502 series is our unique breakaway system solution designed for round post roadside signage. In the event of a collision, the system is engineered to safely activate protecting the pole and driver. Available in various ODs.

SB502 – PROFILE



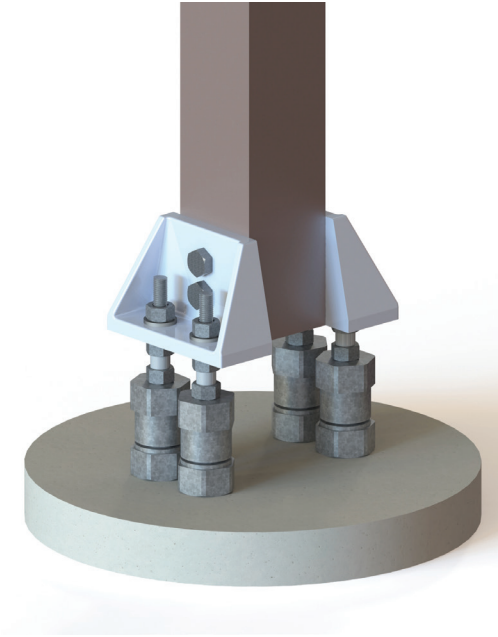
SB502 – EXPLODED



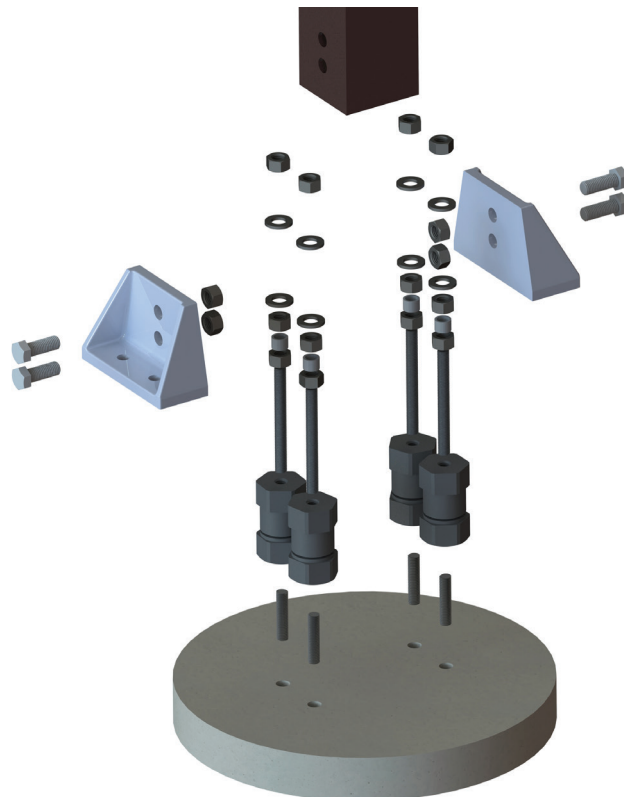
SB502

The SB503 product series is created for use in square post roadside signage. Built to meet or exceed all required FHWA and AASHTO Standard Specifications, the system is designed to safely activate upon impact by an errant vehicle.

SB503 – PROFILE



SB503 – EXPLODED



SB503

Contact the Safety Base Group

21 South Landing Drive
Oak Bluff, MB
R4G 0C4

Toll-Free: 1-866-209-9435
Phone: (204) 896-1333
Email: info@safetybaseltd.com

safetybaseltd.com



MAKING ROADS SAFER FOR OVER FORTY YEARS