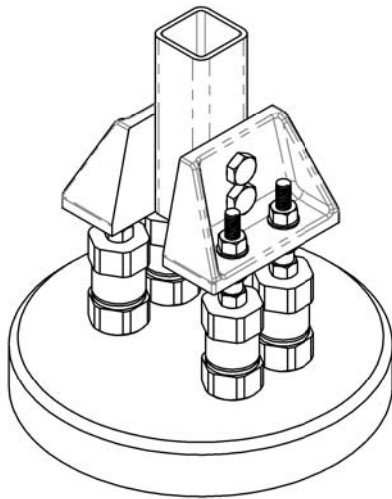
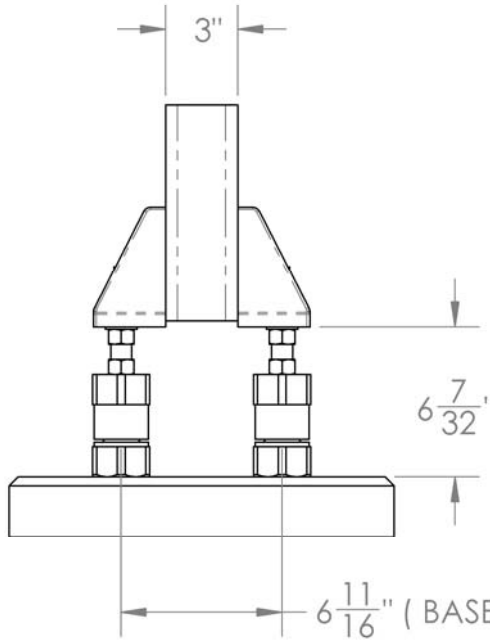


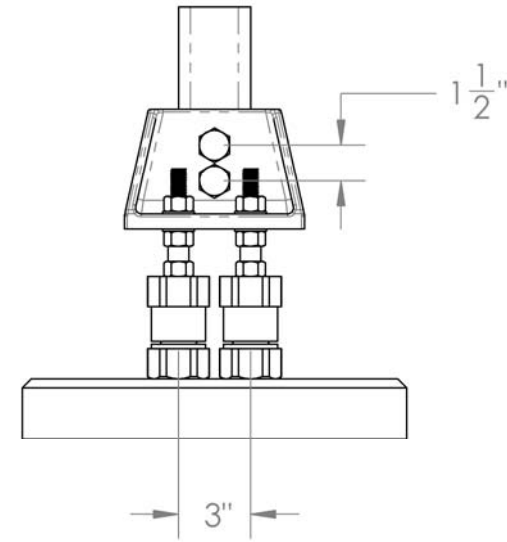
ITEM NO.	PART NO.	DESCRIPTION	TYPE 1/QTY.	TYPE 2/QTY.	MATERIAL
1	-	SQ. POST	1	1	
2	M33	SQ. POST BRACKET	2	2	DUCTILE IRON - HOT DIP GALV. ASTM A153
3	M17	3/4" - 10 UNC GALV. HEX BOLT X 2" LG.	4	4	ASTM A325
4	M65	3/4" GALV. LOCK WASHER	4	4	
5	M16	3/4" - 10 UNC GALV. HEAVY HEX NUT	4	4	ASTM A194 Gr 2H
6	C10S ASSY	PLAIN COUPLER C10S ASSY	4	-	
6	C10SG ASSY	GALV. COUPLER C10S ASSY	-	4	
7		CONCRETE BASE WITH ANCHORS	1	1	



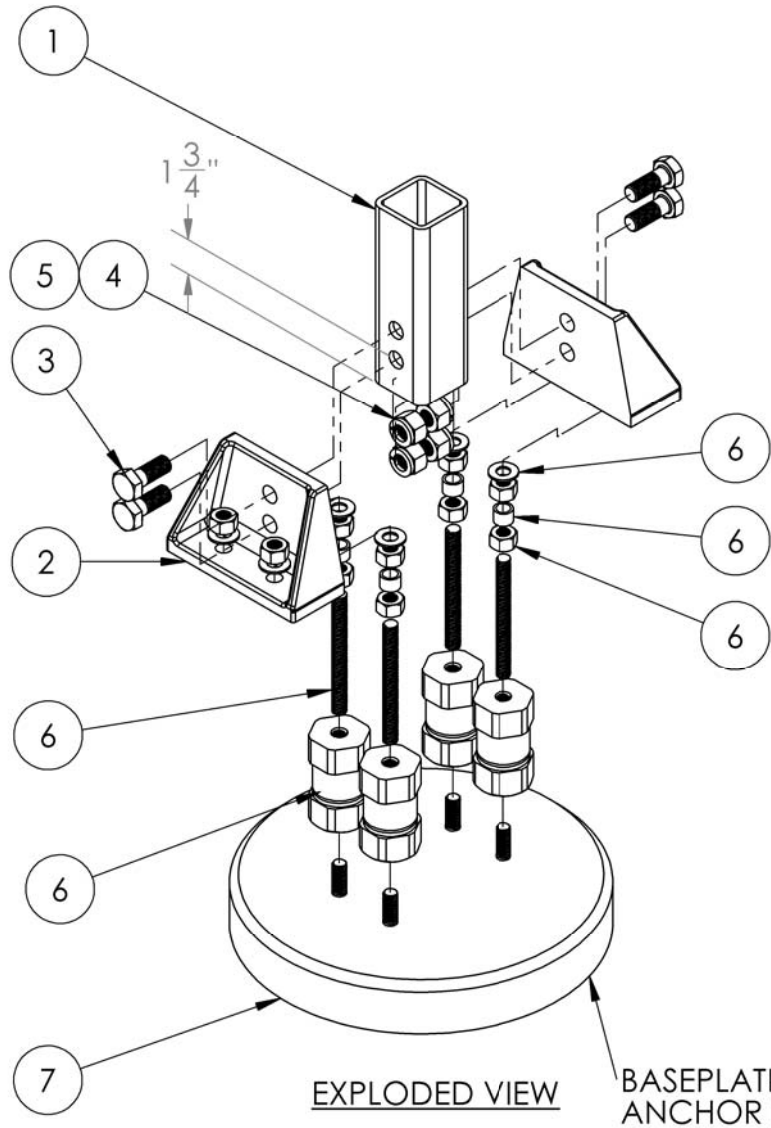
ISOMETRIC VIEW



SIDE VIEW



FRONT VIEW



EXPLODED VIEW

BASEPLATE WITH 5/8"-11 UNC ANCHOR BOLTS

NOTE: REFER TO SAFETY BASE INSTALLATION INSTRUCTIONS

TYPE 1: ALL GALV. COMPONENTS EXCEPT COUPLERS
 TYPE 2: ALL GALV. COMPONENTS INCLUDING COUPLERS

DO NOT SCALE THIS DRAWING

PROPRIETARY AND CONFIDENTIAL

THE INFORMATION CONTAINED IN THIS DRAWING IS THE SOLE PROPERTY OF SAFETY BASE LTD.. ANY REPRODUCTION IN PART OR AS WHOLE WITHOUT THE WRITTEN PERMISSION OF SAFETY BASE LTD. IS PROHIBITED.

REV.	DESCRIPTION	APPROVED	DATE	NAME	DATE

TOLERANCES UNLESS SPECIFIED
 FRACTIONAL ± 1/32"
 TWO PLACE DECIMAL ± .02"
 THREE PLACE DECIMAL ± .002"
 ANGULAR ± 1"
 DIMENSIONS INCHES
 SCALE: 1:8



SAFETY BASE LTD.

SQ Post Support
 General Assembly
 Male Anchor Installation

FILE No.: T001 04 03

SIZE B	DWG. NO. SB503-1	SHEET 1 OF 1	REV. 2
------------------	----------------------------	--------------	------------------