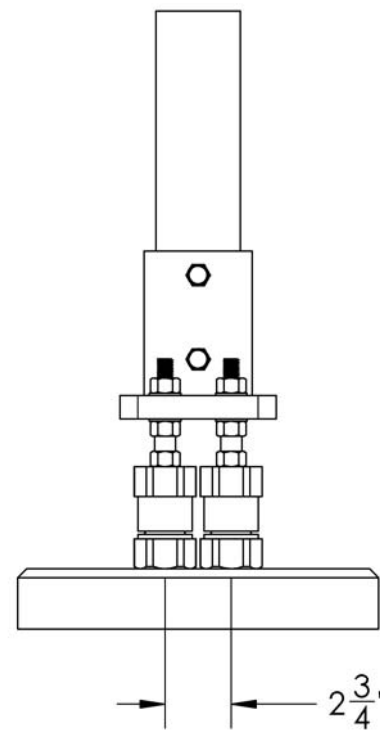


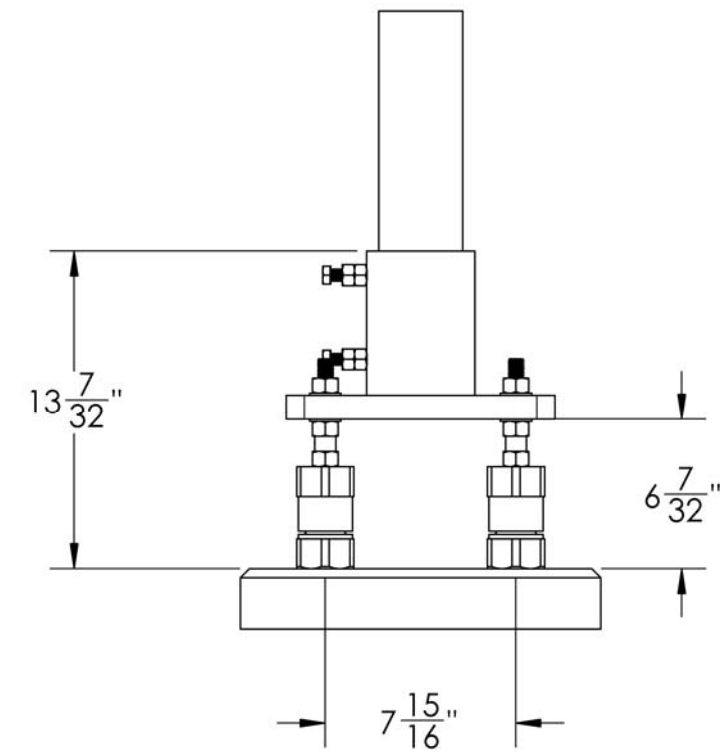
ITEM NO.	PART NO.	DESCRIPTION	QTY.	MATERIAL
1	M26	5/8" NOM. GALV. FLAT WASHER	8	ASTM F436
2	M27	5/8"-11 UNC GALV. HEAVY HEX NUT	12	ASTM A194 GR 2H
3	M28	PLASTIC SPACER	4	HDPE
4	M25	5/8"-11 UNC GALV. STUD X 6" LG.	4	ASTM A193 GR. B7
5	C10S	C10S COUPLING	4	GRAY CAST IRON
6		CONCRETE BASE WITH ANCHORS	1	
7	RPBP-3	3" NOM BASE PLATE ASSEMBLY	1	
8		SIGN POST	1	
9	M56	1/2" - 13 UNC HEX HD GALV BOLT X 2" LG.	2	ASTM A449
10	M24	1/2"-13 UNC GALV. HEAVY HEX NUT	2	ASTM A194 GR 2H

ISOMETRIC VIEW

EXPLODED VIEW



BACK VIEW



SIDE VIEW

NOTE: REFER TO SAFETY BASE INSTALLATION INSTRUCTIONS

DO NOT SCALE THIS DRAWING				NAME		DATE	
PROPRIETARY AND CONFIDENTIAL THE INFORMATION CONTAINED IN THIS DRAWING IS THE SOLE PROPERTY OF SAFETY BASE LTD.. ANY REPRODUCTION IN PART OR AS WHOLE WITHOUT THE WRITTEN PERMISSION OF SAFETY BASE LTD. IS PROHIBITED.				DRAWN			
				CHECKED			
				TOLERANCES UNLESS SPECIFIED			
				FRACTIONAL                    ± 1/32" TWO PLACE DECIMAL       ± .02" THREE PLACE DECIMAL     ± .002" ANGULAR                        ± 1°			
REV.		DESCRIPTION		APPROVED		DATE	
				SCALE: 1:8			
				<b>SAFETY BASE LTD.</b> 3" Nom. Round Post Support General Assembly Male Anchor Installation			
				FILE No.: T001 04 03			
				SIZE <b>B</b>	DWG. NO. <b>SB502-1</b>		SHEET 1 OF 1