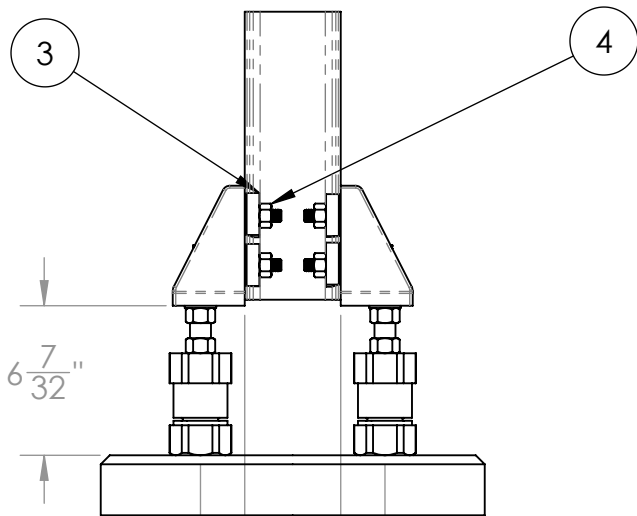
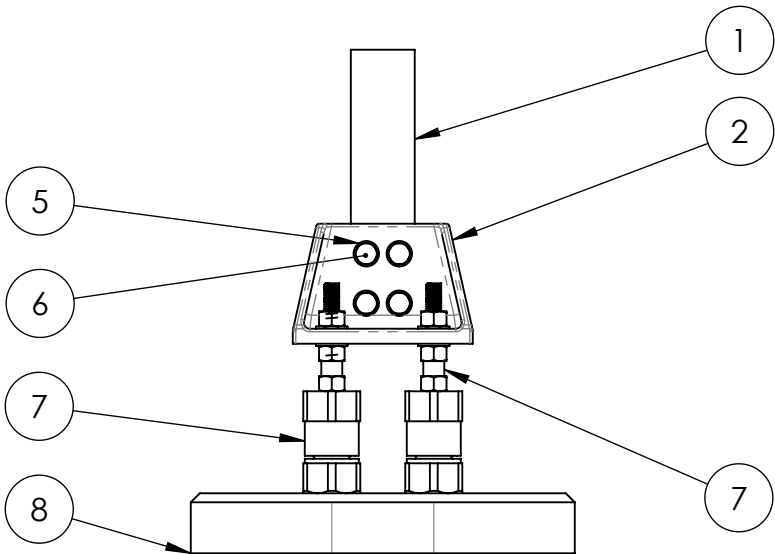


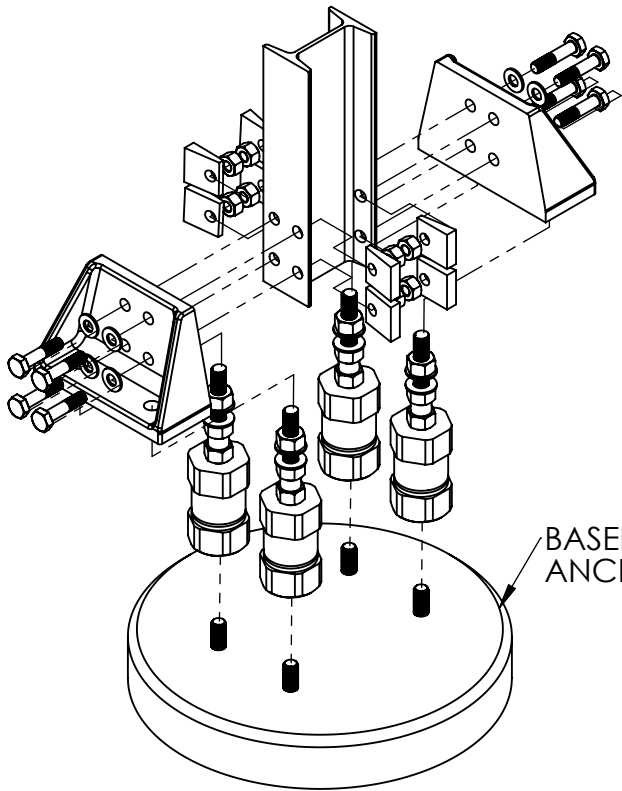
ISOMETRIC VIEW



SIDE VIEW



FRONT VIEW




EXPLODED VIEW

ITEM NO.	PART NO.	DESCRIPTION	TYPE 1/QTY.	TYPE 2/QTY.
1		LOWER SUPPORT COLUMN	1	1
2	M20	S SECTION BASE BRACKET	2	2
3	M21	CLIPPED SQ. GALV. BEVEL WASHER	8	8
4	M24	1/2"-13 UNC GALV. HEAVY HEX NUT	8	8
5	M23	1/2" NOM. GALV. FLAT WASHER	8	8
6	M57	1/2"-13 UNC GALV. HEX HD BOLT X 2 1/4" LG.	8	8
7	C10S ASSY	PLAIN COUPLER C10S ASSY	4	-
7	C10SG ASSY	GALV. COUPLER C10S ASSY	-	4
8		CONCRETE BASE FEMALE ANCHORS	1	1

- NOTES:
1. REFER TO INSTALLATION INSTRUCTIONS
 2. SEE DRAWING SB501-2 FOR FEMALE ANCHOR INSTALLATION
 3. SEE DRAWING SB501-3 FOR KNEE PLATE INSTALLATION

TYPE 1: ALL GALV. COMPONENTS EXCEPT COUPLERS
TYPE 2: ALL GALV. COMPONENTS INCLUDING COUPLERS

DO NOT SCALE THIS DRAWING					NAME	DATE
PROPRIETARY AND CONFIDENTIAL THE INFORMATION CONTAINED IN THIS DRAWING IS THE SOLE PROPERTY OF SAFETY BASE LTD.. ANY REPRODUCTION IN PART OR AS WHOLE WITHOUT THE WRITTEN PERMISSION OF SAFETY BASE LTD.IS PROHIBITED.					DRAWN	
					CHECKED	
					TOLERANCES UNLESS SPECIFIED	
					FRACTIONAL ± 1/32"	
					TWO PLACE DECIMAL ± .02"	
					THREE PLACE DECIMAL ± .002"	
				ANGULAR ± 1°		
				DIMENSIONS	INCHES	
REV.	DESCRIPTION	APPROVED	DATE	SCALE: 1:8		



SAFETY BASE LTD.
"S" Section Post Support
General Assembly
Male Anchor Installation

FILE No.: T001 04 03

SIZE
B

DWG. NO.
SB501-1

SHEET 1 OF 1

REV.
3